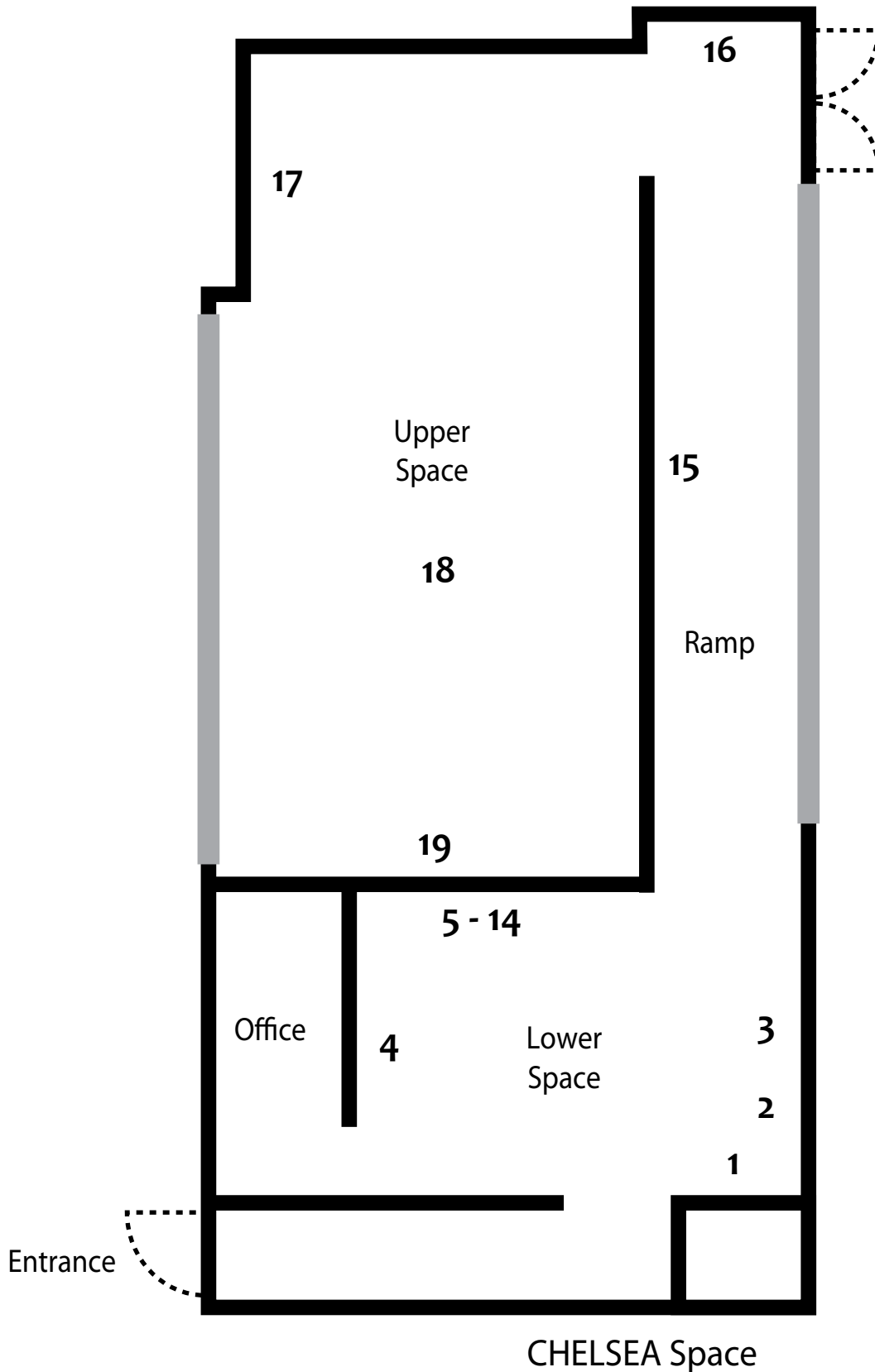


NEAL WHITE

FIELDWORKS FROM THE MUSEUM OF THE VOID
EXPERIMENTS IN THE EVENT OF AN ARCHIVE

30 June – 31 July 2010



List of Works

1. Beyond the Divisible, 2010
Video - Spiral Jetty as seen through John Lathams Spectacles - July 2008 With thanks to John Latham Foundation
2. Points of Interest in the `Great Salt Desert Region
Map based around CLUI Residency at Wendover Airbase (1) - also marks Spiral Jetty (38) and Great Salt Lake Minerals Corporation Plant (35)
CENTRE FOR LAND USE INTERPRETATION ©
3. THE VOID, 2006
Neon Sign - Collection of the Artist
4. ENTROPIC POPSICLE
Limited Edition Popsicles - *Free for Signatories of the Petition.*
5. Samples taken from sites at Spiral Jetty
6. Samples taken from Remote Location
7. John Latham's Spectacles
8. MERO Model for F-Utility Field Research System for Office of Experiments
9. MERO - node samples
10. Robert Frank - Energy and How to Get It, 1981, b/w, 28 min.
11. Research Library
Various books and publications - Office of Experiments Collection
12. Photographs of F-Utility Unit in and around Wendover - Neal White
13. Google Maps shots of Remote Location - see Going Nowhere
14. Points of Interest Around The Wendover Air Field
Site of CLUI Residency
CENTRE FOR LAND USE INTERPRETATION ©
15. Geo-location drawing from Going Nowhere, 2008, Print on Foamex
16. GOING NOWHERE, 2008-9, Performance Video
17. ENTROPIC POPSICLE Video, 2010
18. F-Utility Unit 2008-10 (custom made MERO display system) with mirror ball, sign and cooler.
19. ENTROPIC POPSICLE, Giclee Print on Archival Paper