

# Chelsea Space

## Rasheed Araeen, Peter Fillingham and Chelsea Space

Curated by Donald Smith

14 November– 14 December, 2018

Tuesday – Friday 11am-5pm and by appointment

**Chelsea Space** is delighted to present new sculpture by **Rasheed Araeen** (b.1935) and **Peter Fillingham** (b. 1964), the first time that these two artists have shown their work together.

Araeen and Fillingham take very particular and sensitive approaches to how an audience encounters material, colour, space, sculpture, repetition, modularity and unit structuring. Their sculptures also contain narratives embedded in the work, which are humanist and political in nature, that can be perceived through their abstract forms.

The placement of works in relation to each other and to the architecture of Chelsea Space is modernist and formalist in approach. Rather than presenting a context or history that overshadows the artwork itself, Chelsea Space's intention is to offer the opportunity for Araeen and Fillingham to situate their work and allow it to have what Araeen describes as "the dignity of objecthood".

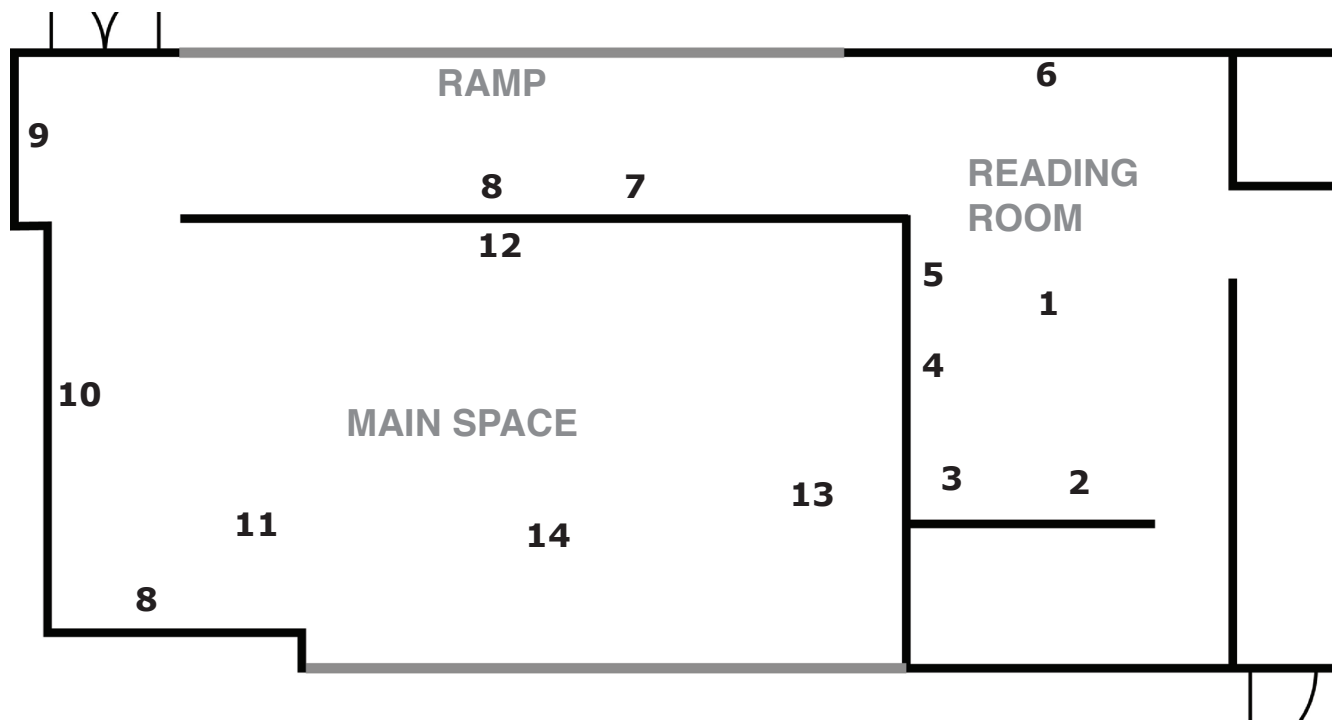
In a discussion between Fillingham and Araeen in July 2018, they talked of a 'Chelsea Space approach' to exhibition projects, allowing artists to reveal their processes, ideas and work and how the particular architecture of Chelsea Space has presence in this curatorial process. From this they concluded that the title of the exhibition should be simply *Rasheed Araeen, Peter Fillingham and Chelsea Space* implying a spirit of collaboration, inclusion, equality and openness. Both artists believe in collective endeavour in their practice, whether in relation to audience participation in an exhibition or event, or between artists, technicians, writers, curators and other participants in the process of making artworks and exhibitions.

Special thanks to Mohammed Mushtaq; Majella Dowdican; Phil Holden; Grosvenor Gallery, London; Aicon Gallery, New York; Rossi Rossi, Hong Kong.

[www.chelseaspace.org](http://www.chelseaspace.org)   [info@chelseaspace.org](mailto:info@chelseaspace.org)   [twitter:@CHELSEAspace](https://twitter.com/CHELSEAspace)   [instagram:@chelseaspace](https://www.instagram.com/chelseaspace)

Chelsea Space | Chelsea College of Arts | 16 John Islip Street | London | SW1P 4JU

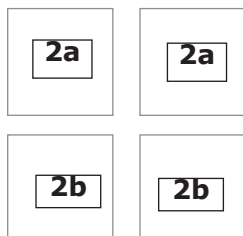
## LIST OF WORKS



**READING ROOM:** curated in collaboration with Chelsea College of Arts MA Curating and Collections students JingYi Chen, YingYing Lin, Lourdes Mendez-Castrillon Fernandez, Brandon Rickett, XiaoTong Xia and LiTing Zhang.

**1. Reading Room Table by Rasheen Araeen (2018)** see bibliography in Reading Room for details of publications within the Reading Room

### **2. Wall Cabinet**



2a. **Peter Fillingham**, *Untitled (Prototype for a Painting)*, 2018  
2b. **Rasheed Araeen**, *Maquettes*, 2018

**3. Peter Fillingham**, *Maquette for Twinkle*, 2018

**4. Peter Fillingham**, *Untitled (Study for Multiples)*, 2018

**5. Peter Fillingham**, *Untitled sketches for Twinkle*, 2018

**6. Rasheed Araeen**, *Studies for Guftugu series (A Conversation Between Al Baruni and Ibn Sina)*, 2012-14

## **RAMP**

**7. Peter Fillingham**, *Work for Chelsea Space (ai)*, 2018

**8. Peter Fillingham**, *ai*, screenprint works made for *Gymnasium*, Bregenz, Austria 2001

**9. Peter Fillingham**, *Poppy*, 2018

## **MAIN SPACE**

**10. Rasheed Araeen**, *Untitled*, 2018

**11. Rasheed Araeen**, *Auth Rangelay Yaar (Eight Colourful Friends)*, 2018

**12. Rasheed Araeen**, *Working Maquette for Rhapsody in Four Colours*, 2018

**13. Peter Fillingham**, *Twinkle*, 2018

**14. Peter Fillingham**, *Untitled (Two Lines)*, 2018